

Winter solar power generation comparison



Overview

Solar production is significantly reduced during the winter, by as much as 80% compared to the summer months. This is down to the shorter day length, the increased cloud cover, and the lower angle of the sun. Calculating the annual output before installing the solar power system for a residential, commercial, or industrial purpose is essential. It gives you an idea and a way to get the most out of it. It is. During the summer months, the sun is at a higher angle in the sky and above the horizon for longer periods, while during the winter months, it is at a lower angle in the sky and above the horizon for shorter periods. The cells are typically made of silicon, a non-metallic chemical element that conducts electricity. When sunlight hits the solar panels, the cells. A Comparison of Performance in Snowy vs.

Winter solar power generation comparison

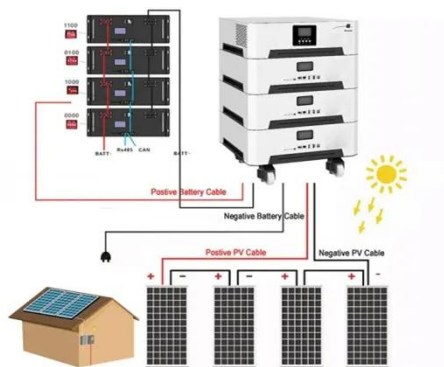


What does solar energy in winter compare to? , NenPower

Utilization of solar energy during winter brings forth multifaceted advantages. The comparative analysis against other energy sources highlights its integral role in sustainable practices.

Solar panels performance in the winter vs summer (with examples)

How much electricity do solar panels generate in winter? Winter here is a different story. It snows a lot, and snow can cover my entire system for a week or more. A light dusting of snow will ...



Solar Power Generation During Winter

This Modernize educational guide breaks down the correlation ...

Solar Performance in Winter, Spring, and Fall Compared to

Summer

The data shows us that the answer to the question, "What is the seasonal effect on solar performance?" is (as with many things in solar), it depends. The location of the installation and the ...



Solar Panel Performance: Winter vs Summer (Guide 2023)

To answer this in more detail, we've come up with a guide where we'll discuss the impact of these two seasons on solar energy production, from daylight hours to temperature to pesky snow ...

Solar Power Generation During Winter

This Modernize educational guide breaks down the correlation between the change of seasons and the resulting savings from an investment in solar energy.



Are Solar Panels Effective in Winter? A Comparison of Performance in

Solar panels can be effective in winter, capturing approximately 70-80% of their rated output even in snowy conditions



due to their design and the reflective properties of snow.

Solar Panel Output: Summer vs Winter Production

This comprehensive guide examines the science behind seasonal solar variation, compares real-world summer versus winter output, and provides actionable strategies to optimize ...



How Much Solar Panel Power Output in Winter vs Summer?

Solar production is significantly reduced during the winter, by as much as 80% compared to the summer months. This is down to the shorter day length, the increased cloud cover, and the lower angle of the ...

Winter vs. Summer PV generation , ieco

As you can imagine, in general terms, an installation in winter generates less than in summer, but how much less? The

amount depends on the location and characteristics of the ...

HEAT DISSIPATION

Cold aisle containment,
making optimal refrigeration effect;



Solar Panel Output Winter Vs Summer

Solar panels will produce electricity even in winter but there will be an average 50% reduction. According to the source solar panels tend to work more efficiently in cool months due to ...

Contact Us

For catalog requests, pricing, or partnerships, please visit:
<https://www.kreatywny-dom.pl>

