

What is the use of the flywheel energy storage heat sink in the communication base station



Overview

Since FESS is a highly inter-disciplinary subject, this paper gives insights such as the choice of flywheel materials, bearing technologies, and the implications for the overall design and performance. For the application survey, we focus. Flywheel energy storage (FES) works by spinning a rotor (flywheel) and maintaining the energy in the system as rotational energy. Pumped hydro has the largest deployment so far, but it is limited by geographical locations. Primary candidates for. Flywheel energy storage is a mechanical energy storage technology that has gained significant attention in recent years due to its potential to enhance the efficiency and reliability of renewable energy systems. Kinetic energy can be described as “energy of motion,” in this case the motion of a spinning mass, called a rotor.

What is the use of the flywheel energy storage heat sink in the com



Flywheel Energy Storage Systems and their Applications: A Review

Fly wheels store energy in mechanical rotational energy to be then converted into the required power form when required. Energy storage is a vital component of any power system, as the stored energy can be used to ...

Flywheel Energy Storage System , Springer Nature Link

Flywheel energy storage stores energy in the form of mechanical energy in a high-speed rotating rotor. The core technology is the rotor material, support bearing, and electromechanical control system.

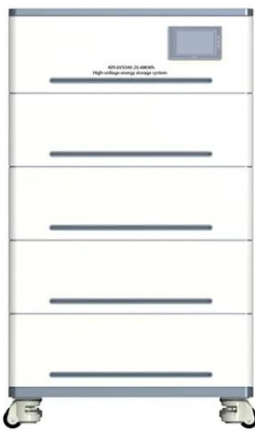


Flywheel Energy Storage: A Comprehensive Guide

Flywheel energy storage is a technology that stores energy kinetically in a rotating flywheel. The flywheel is typically made of a high-strength, low-friction material, such as steel or carbon fiber, and is ...

A review of flywheel energy storage systems: state of the art and

Thanks to the unique advantages such as long life cycles, high power density, minimal environmental impact, and high power quality such as fast response and voltage stability, the flywheel/kinetic ...

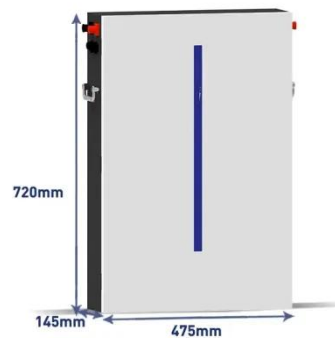


Flywheel Energy Storage System (FESS)

Flywheel energy storage systems (FESS) use electric energy input which is stored in the form of kinetic energy. Kinetic energy can be described as "energy of motion," in this case the motion of a spinning mass, called a ...

Flywheel energy storage

First-generation flywheel energy-storage systems use a large steel flywheel rotating on mechanical bearings. Newer systems use carbon-fiber composite rotors that have a higher tensile strength than steel and can ...



Flywheel energy storage systems: A critical review on technologies

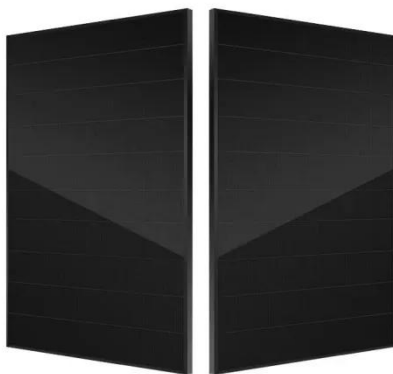
In this article, an overview of the FESS has been discussed concerning its background theory, structure with its

associated components, characteristics, applications, cost model, control approach, ...



The most complete analysis of flywheel energy storage for new energy

It uses a high-speed rotating flywheel to store energy in the form of kinetic energy. When energy is urgently lacking or needed, the flywheel slows down and releases the stored energy.



A review of flywheel energy storage systems: state of the art and

Energy storage systems (ESS) play an essential role in providing continuous and high-quality power. ESSs store intermittent renewable energy to create reliable micro-grids that run continuously and ...

Contact Us

For catalog requests, pricing, or partnerships, please visit:

<https://www.kreatywny-dom.pl>

