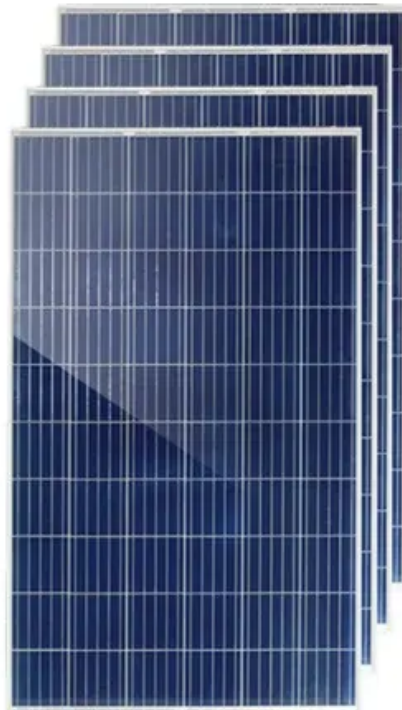
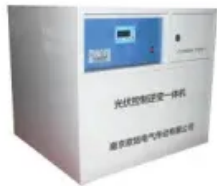


What is the BMS of the power battery



What is the BMS of the power battery



BMS Explained: What It Is, How It Works, and Why Every Battery

A Battery Management System (BMS) is an electronic control unit that monitors, manages, and protects a battery pack--especially those made of lithium-ion or other rechargeable ...

What Is A BMS (Battery Management System)?

At its core, the BMS prevents the battery from operating outside safe limits. It monitors each individual cell and calculates how much current can safely go in (charging) or come out ...



What is a Battery Management System? Complete Guide to BMS ...

Battery management systems perform several interconnected functions that work together to ensure safe, efficient, and long-lasting battery operation. These core capabilities form the ...



What Is a Battery Management System (BMS)?

Without proper management, issues such as overcharging, deep discharging, thermal runaway, and cell imbalance can severely impact safety, lifespan, and performance. The BMS serves ...



Understanding Battery Management System Units and Their Critical ...

A Battery Management System unit is an electronic system that monitors and controls rechargeable batteries. Its primary purpose is to protect the battery from operating outside its safe limits, ensuring ...

Battery Management Systems (BMS): A Complete Guide

What is a Battery Management System (BMS)? A Battery Management System (BMS) is an electronic system that manages a rechargeable battery by monitoring its state, controlling its ...



What is a Battery Management System?

A BMS monitors the temperatures across the pack, and open and closes various valves to maintain the temperature of



the overall battery within a narrow temperature range to ensure optimal battery ...

Battery management system

A battery management system (BMS) is any electronic system that manages a rechargeable battery (cell or battery pack) by facilitating the safe usage and a long life of the battery in practical scenarios ...



Battery Management System (BMS) Detailed Explanation: Working ...

Battery Management System (BMS) is the "intelligent manager" of modern battery packs, widely used in fields such as electric vehicles, energy storage stations, and consumer electronics.

What is a Battery Management System (BMS)? Essential Guide for

Monitoring and Protection - The BMS keeps track of voltage, current, and temperature at both cell and pack levels. This constant monitoring prevents

batteries from operating outside safe ...



Contact Us

For catalog requests, pricing, or partnerships, please visit:
<https://www.kreatywny-dom.pl>

