

KREATYWNY ENERGY POLSKA

What base stations make up mobile communications



Overview

In communications, a base station is a communications station installed at a fixed location and used to communicate as part of one of the following:

- a system, or;
- a system such as or .

What base stations make up mobile communications



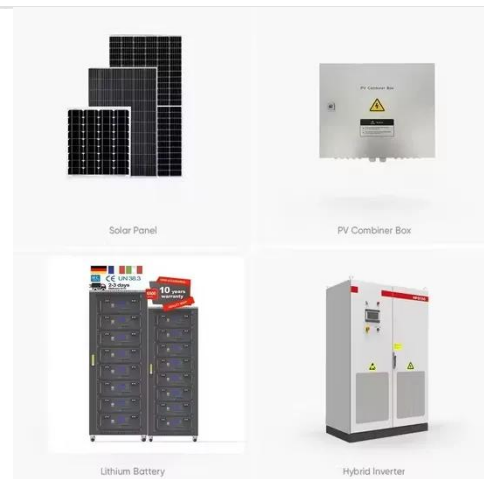
What Is A Base Station?

A base station is an integral component of wireless communication networks, serving as a central point that manages the transmission and reception of signals between cellular networks ...

Base station

Overview Wireless communications Land surveying Computer networking See also

In radio communications, a base station is a wireless communications station installed at a fixed location and used to communicate as part of one of the following: o a push-to-talk two-way radio system, or; o a wireless telephone system such as cellular CDMA or GSM cell site.



What are Base Station in Telecommunications?

The Backbone of Wireless Networks A base station connects your phone to the network. It acts as a hub between mobile devices and the core system. Base stations form the backbone of ...



What is a Base Station? -- From Communication Core to Thermal ...

Simply put, a base station (BS) is a wireless transceiver device in a mobile communication network that provides wireless coverage and communicates with mobile terminals ...



Mobile Base Stations: Cells, Sectors, Carriers Explained

Cell, sector, carrier, and carrier frequency are all concepts related to mobile base stations. We will start by explaining the base station. A base station, abbreviated BS, is an important ...

Understanding Base Stations in Mobile Communication

A base station is a fixed point that enables wireless communication between mobile devices and the

network. These stations consist of radio transceivers, antennas, and a controller which facilitate the ...



Understand Cellphone Basestation Technology » Electronics Notes

The base station is the most visible element of a mobile or cellular telecommunications network. These cell phone base stations can take many formats, but they are characterised by the antennas on ...

Base Stations

The present-day tele-space is incomplete without the base stations as these constitute an important part of the modern-day scheme of wireless communications. They are referred to as cell ...



What Is a Base Station? Definition and How It Works

A base station is a fixed transceiver that serves as the central communication point for mobile devices within a defined

geographical area, known as a cell. It is sometimes called a cell tower.



Base station

Base station (or base radio station, BS) is - according to the International Telecommunication Union 's (ITU) Radio Regulations (RR) [1] - a " land station in the land mobile service." A base station is ...



Base Stations and Cell Towers: The Pillars of Mobile Connectivity

Base stations use antennas mounted on cell towers to send and receive radio signals to and from mobile devices within their coverage area. This communication enables users to make ...

Contact Us

For catalog requests, pricing, or partnerships, please visit:
<https://www.kreatywny-dom.pl>

