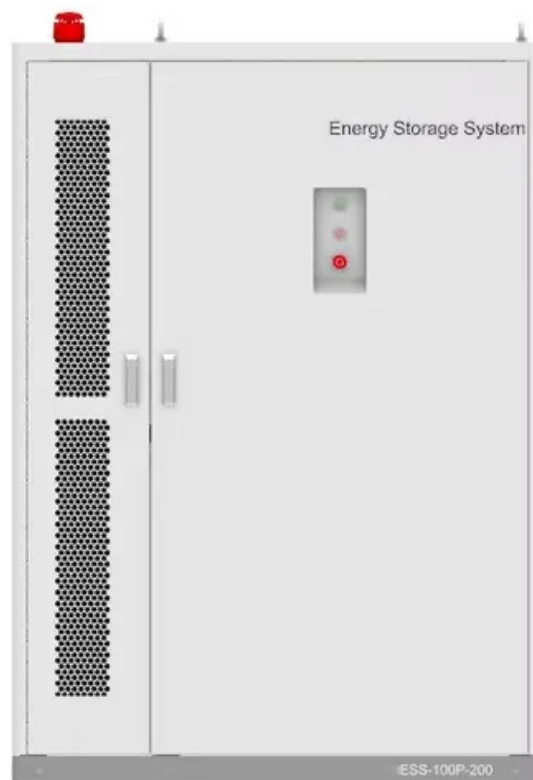


Tips for installing and aligning rainproof photovoltaic panels



Overview

This guide explains how to determine the best solar panel angle by latitude, compare roof-mounted vs. ground-mounted solar, and apply proven solar installation tips to boost your system's solar power performance and maximize every bit of sunlight. For anyone diving into solar energy, knowing how to align panels isn't just helpful—it's essential. From the angle to the direction, every detail matters when you want to make the most of your investment. Don't worry, though; it's simpler than it sounds, and I'm here to break it down for you. In a solar photovoltaic power system, each panel should ideally track the sun during the day to obtain the maximum possible energy. Whether you're working on a residential rooftop, a commercial facility, or a utility-scale solar farm, the rail structure forms the foundational backbone of.

Tips for installing and aligning rainproof photovoltaic panels



1075KWHH ESS

Solar Panel Best Angle , Tilt & Orientation Guide 2025

Learn tilt formulas, seasonal adjustments, and tips to maximize energy efficiency in 2025. When it comes to installing solar panels, angle and orientation are just as important as the panels ...

Can Solar Panels Be Installed in the Rain?

Professional installation is critical for making sure that photovoltaic panels are indeed waterproof. Knowledgeable installers know about roof types and use suitable placing and racking ...



How to Align Solar Panels for Maximum Efficiency: Tips for Optimal

Learn how to align your solar panels for maximum efficiency with this comprehensive guide. Discover the importance of tilt angles, optimal directions, seasonal adjustments, and tools like solar trackers. ...

Best home solar panel positioning tips for 2026

Discover the best home solar panel positioning tips to boost efficiency, reduce energy waste, and get the most out of your DIY solar installation.



Nominal Capacity

230Ah

Nominal Energy

50kW/100kWh

IP Grade

IP54

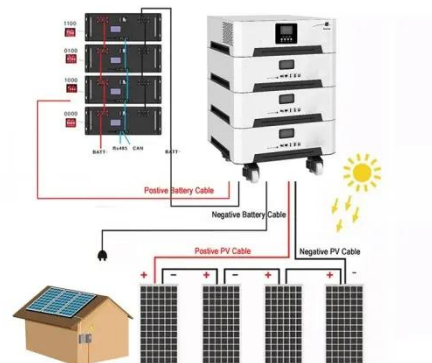


How To Align Solar Panels?

Solar panels should face directly into the sun to optimize their output. This article explains how to find the right tilt and azimuth angle to get the most production out of your array.

Tips for installing and aligning rainproof photovoltaic panels

Here's how it works. Installing solar panels can be a great investment for those conscious of their environmental impact (Image credit: Getty Images) Installing solar panels is a great idea to increase ...



How to Align Solar Panels: Solar Panel Alignment Tools

To align solar panels effectively, it's important first to understand the basics of how solar panels work. They use

OEM service

Hot Colors:



Color can be customized
more questions just do not hesitate to contact us

LOGO Position: (Screen printing)



photovoltaic cells that convert sunlight directly into electricity.

Solar Panel Rail Installation Tips - Ensure Safety and Durability

Discover expert tips on installing solar panel rails for residential, commercial, and ground-mount systems. Learn how to ensure safety, alignment, waterproofing, and proper grounding.

Product Details



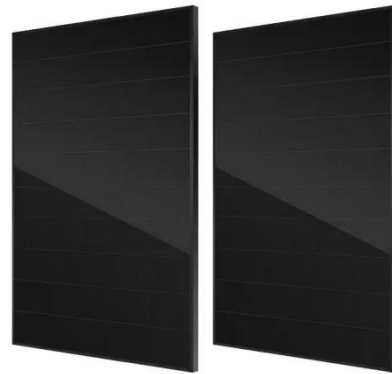
Optimize Solar Panel Placement for Peak Performance

To get the most out of your solar investment, solar panel placement matters more than you think. From proper tilt and orientation to precise solar shading analysis, smart design choices ...

How to correctly align solar panels for maximum efficiency?

Harnessing the power of the sun through solar panels is an effective way to reduce energy costs and contribute to a

more sustainable future. However, to maximize the efficiency and output of these ...



Contact Us

For catalog requests, pricing, or partnerships, please visit:
<https://www.kreatywny-dom.pl>

