

# **Test method for wind resistance of photovoltaic panels**



## Overview

---

Stress tensile tests (pull-out tests) verify the stability and load-bearing capacity of the solar panel roots, which is crucial for wind and weather resistance. It is proposed that a maximum net pressure coefficient of  $-1.7$  be used in panel system design. Whilst this will ensure the panel system will be structurally adequate, consideration should be given to using the largest peak negative (uplift) aerodynamic suction that an initial static strength test be conducted. Anchor load tests, or pull-out tests, are a key method in photovoltaic installations, especially in the construction of ground-mounted solar power plants. One of the fundamental terms is 'design wind speed', which denotes the maximum wind velocity that a structure is expected to withstand during its lifetime. This speed is specified in ASCE 7-16 (solar panel wind load calculator). Users can enter the site location to get the wind speed and terrain data, enter the solar panel parameters and generate the design, and the parameters of the solar photovoltaic panel structure. Do photovoltaic solar panels withstand simulated wind loads?

Do wind direction and panel inclination affect photovoltaic trackers?

The effect of wind direction and panel.

## Test method for wind resistance of photovoltaic panels

---



### Photovoltaic bracket wind resistance test

Do wind direction and panel inclination affect photovoltaic trackers? The effect of wind direction and panel inclination is presented. Wind load effects are studied in a computational model. The main ...

### Numerical study on the sensitivity of photovoltaic panels to wind load

In this work, the effects of wind loads on six PV array structure configurations installed on offshore floating PV platforms at high Reynolds numbers are investigated by using the computational ...



### Wind Load , PVQAT

This work is to propose a new wind-load test method to clarify the safety or performance issues, for PV module and its fixed parts, caused by wind and installation conditions.



## Solar Panel Wind Load Calculation

---

## ASCE-7-16 , SkyCiv

Users can enter the site location to get the wind speed and terrain data, enter the solar panel parameters and generate the design wind pressures. With the standalone version, you can ...



## Wind Load Considerations for Solar Panels: A Comprehensive Guide

Understanding wind load is crucial for the stability of solar panel installations, especially in high-wind areas. This comprehensive guide covers the significance of wind load calculations, factors ...

## Pull-out testing of solar structures resistance

Stress tensile tests (pull-out tests) verify the stability and load-bearing capacity of the solar panel roots, which is crucial for wind and weather resistance.



## Specifications for wind resistance design of photovoltaic panels

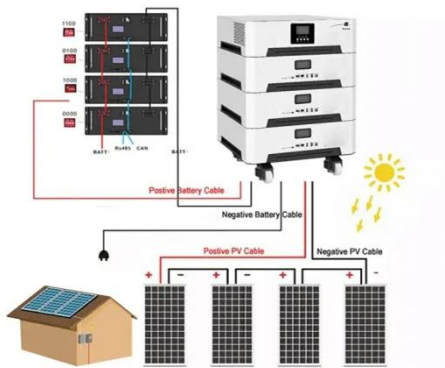
The pressure field on the upper and lower surfaces of a photovoltaic (PV) module comprised of 24 individual PV



panels was studied experimentally in a wind tunnel for four different wind directions.

## Top 20 Solar Panel Testing Methods

Find the top 20 solar panel testing methods to ensure durability, performance, and efficiency. Explore comprehensive techniques for optimal solar panel testing.



## Photovoltaic panel wind resistance test standards

We recommend wind tunnel testing be conducted for the most common rooftop PV installations to verify methods and calculations. The installation types include stand- off mounting parallel to the roof, ...

## TECHNICAL NOTE No.5 Simulated Wind Load Strength Testing ...

The CTS provides a service to the building industry for testing the effects of wind forces on buildings and building

components. CTS has the equipment and technical expertise to test photovoltaic (PV) solar ...



---

## Contact Us

---

For catalog requests, pricing, or partnerships, please visit:  
<https://www.kreatywny-dom.pl>

