

**KREATYWNY ENERGY POLSKA**

# **Solar panel 530 external dimensions**



## Overview

---

A standard 530-watt solar panel typically measures between 86 to 88 inches in length and 40 to 42 inches in width, with a thickness of about 1. This translates to approximately 24. 530W panels deliver optimal power density: With efficiency ratings of 20-22%, these panels generate nearly double the power of traditional 300W modules while fitting standard residential roof layouts, making them ideal for space-constrained installations in 2025.

Advanced half-cell technology. Brand: Schutten Module Type:

STM530-550/144-S3B Maximum Power: 530-550W Dimensions: 2278x1134x35

(30)mm Weight: 28kg±3% Cable Length: 300mm (+)/300mm (-) Product

Certification: ISO/CE/IEC/PID FREE/INMETRO/PV CYCLE/CEC Packaging :

31/620pcs 37/740pcs . Ø 25 mm at 23 m/s 2400 Pa or 244 kg/m<sup>2</sup> 5400 Pa or

550 kg/m<sup>2</sup> Operating temperature Temp. Power The specifications and

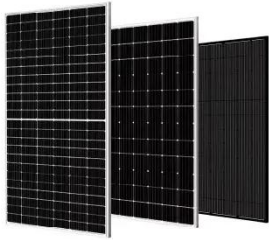
characteristics contained in this datasheet may deviate. LUXEN PERC:

Standard warranty 12 years, can be extended up to 15 years. Ningbo

Renpower New Materials Technology Co.

## Solar panel 530 external dimensions

---

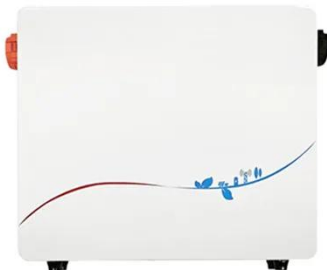


### Up to 530 watt WST-NGX-D3

MECHANICAL DATA WINAICO WST-NGX-D3 SERIES Cell Quantity and wiring of cells Monocrystalline, N-type, bifacial 132 (6 strings x 22 cells) Bifaciality Up to 80 % Dimensions Weight ...

### PERC 182 Full Black Solar Panels 530-550W

Brand: Schutten Module Type: STM530-550/144-S3B Maximum Power: 530-550W Dimensions: 2278x1134x35 (30)mm Weight: 28kg±3% Cable Length: 300mm (+)/300mm (-) Product Certification: ...



### 530-550W Mono

LUXNERI Mono I 530 - 550W FULL BLACK MECHANICAL CHARACTERISTICS Solar Cells No. of Cells Dimensions Weight Front Glass Mono 144 (6x24) 2279 x 1134 x 35mm 27.5kg 35

### AE\_MD-144\_530W-550W\_Ver24.1.1

The specifications and characteristics contained in this datasheet may deviate slightly from our actual products due to the product developments and uncertainty of measurement devices. The ...



### Solar Panel Half-cut Monocrystalline 530 Wp

SOLAR PANEL 530 WATTS , JA SOLAR , Half-cut , Monocrystalline , 144 Cells PV Module , Grade A , Power tolerance 0/+5W , L 2278 mm, W 1134 mm, D 30 mm , 27.30 kg , Material Warranty 12 years , ...

### 530 Watt Solar Panels: Complete 2025 Buyer's Guide & Top Model ...

Comprehensive guide to 530W solar panels. Compare top models from JA Solar, Jinko, Canadian Solar & more. Includes performance data, pricing, and installation tips.



### SPR-P5-530-UPP Solar Panel Information (TCL SunPower Global)

See the table below for available information we have about TCL SunPower Global SPR-P5-530-UPP solar



panels. We do our best to provide information such as the SPR-P5-530-UPP panel dimensions, ...

### Standard Solar Panel Sizes And Wattages (100W-500W Dimensions)

The goal here is to get to the average solar panel size by wattage. You can find typical dimensions of 100W, 150W, 170W, 200W, 200W, 220W, 300W, 350W, 400W, and 500W solar panels summarized ...



### What You Need to Know About the 530 Watt Solar Panel Size for Off ...

A standard 530-watt solar panel typically measures between 86 to 88 inches in length and 40 to 42 inches in width, with a thickness of about 1.2 to 1.6 inches. This translates to approximately 24.5 ...

### Renpower , 530W Solar Module , Solar Panel Datasheet , ENF Panel

...

Detailed profile including pictures, certification details and manufacturer

PDF.



## Contact Us

---

For catalog requests, pricing, or partnerships, please visit:  
<https://www.kreatywny-dom.pl>

