

KREATYWNY ENERGY POLSKA

Photovoltaic panels directly connect electrical appliances



Overview

Solar panels are designed to generate low-voltage DC electricity, which is not directly compatible with most household appliances that require AC electricity. This electricity. Is it possible to connect solar panels directly to your load (i. 50 per watt, featuring 6-10 year payback periods and seamless utility integration through net metering agreements. Appliances like refrigerators can be connected, 2. Air conditioning units also benefit, 3.

Photovoltaic panels directly connect electrical appliances



Can I Connect Solar Panel Directly to Load? (About the Process)

Learn how to safely connect solar panels to your home's electrical system. Complete guide covering grid-tied, off-grid, and hybrid solar installations ...

Can I Use Solar Panel Directly Without Battery: Pros, Cons, and

This article will explore whether it's possible to connect solar panels directly to your appliances and the pros and cons of doing so. By the end, you'll have a clearer understanding of ...



 TAX FREE

1-3MWh

BESS



What Appliances Can Be Powered By Solar Panels?

Find out which home appliances can be powered by solar panels with Eco Happy's guide. Enjoy all the benefits that come with a solar-powered home!

How to Connect Solar Panels to House Electricity: Complete 2025

Guide

Learn how to safely connect solar panels to your home's electrical system. Complete guide covering grid-tied, off-grid, and hybrid solar installations with step-by-step instructions.

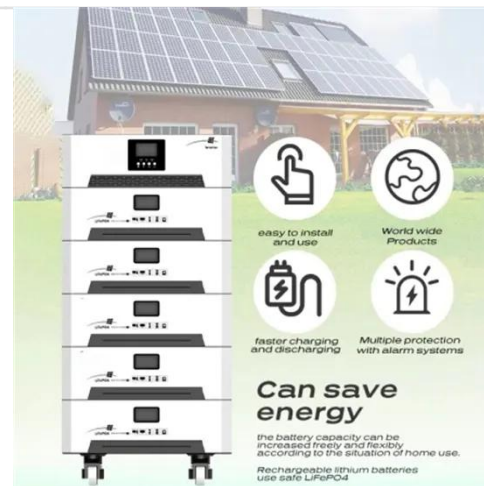


What appliances can be directly connected to solar panels?

Homeowners typically install a solar panel system that gathers sunlight, generating direct current (DC) electricity. This output can be connected to certain appliances, especially those ...

How to Connect Solar Energy Panels to Household Appliances?

However, for most end-users, connecting solar energy panels to home appliances may be an unfamiliar task. In this article, we will explore how to correctly connect solar energy panels to ...



Can I directly attach electrical appliance to solar panels?

While it may seem convenient to directly connect electrical appliances to solar panels, it is not a recommended practice. Solar panels are designed to

generate low-voltage DC electricity, ...



How are solar panels connected to your house?

Solar panels generate energy that flows through an inverter, converting it into usable electricity, which is then integrated into your home's electrical system to power your appliances.



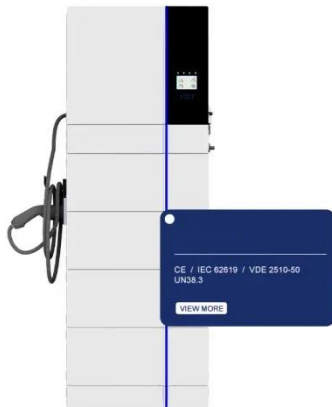
How Plug-In Solar Panels Are Transforming Renewable Energy

These systems integrate solar panels, micro inverters, and optional energy storage, connecting directly to household sockets for easy DIY setup, making them ideal for renters and ...

Can I Connect Solar Panel Directly to Load? (About the Process)

Solar panels are a great way to generate renewable energy, but can you run an appliance directly from a solar panel? The answer is yes, but there are a few

things to keep in mind.



Photovoltaic Panels Directly Connected to Electrical Appliances: A

This surge is driving homeowners to explore photovoltaic (PV) panel systems that bypass traditional grid connections. But wait, does connecting solar panels directly to appliances actually work? Let's break ...

Contact Us

For catalog requests, pricing, or partnerships, please visit:
<https://www.kreatywny-dom.pl>

