

# **Normal acid concentration of energy storage battery**



## Normal acid concentration of energy storage battery

---



### Battery Acid 101: Composition, Function, and Safety

Battery acid is the electrolyte solution used in most traditional lead-acid batteries. Chemically, it's diluted sulfuric acid ( $H_2SO_4$ ), typically mixed with water to achieve a concentration ...

### The Basics of Battery Acid

Battery acid, primarily sulfuric acid ( $H_2SO_4$ ), is essential for the operation of lead-acid batteries due to its corrosive nature and high reactivity, with concentrations between 30% and 50% ...



 LFP 12V 100Ah

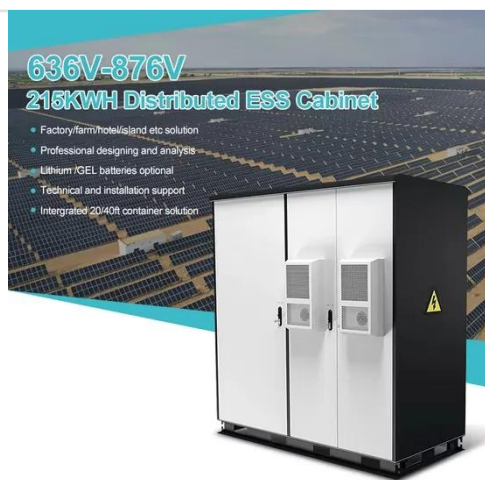


### Battery Acid Composition: Proven Strategies to Optimize Electrolyte

Research shows that acid concentration above 1.30 can reduce cycle life by up to 20% due to grid corrosion, while acid concentration below 1.20 impairs cold-cranking performance ...

## LEAD ACID BATTERIES

Lead acid batteries have a moderate life span and the charge retention is best among rechargeable batteries. The lead acid battery works well at cold temperatures and is superior to lithium-ion when ...



### Battery Acid : Composition, Performance & Cross-Industry Use

Battery acid refers primarily to diluted sulfuric acid (H<sub>2</sub>SO<sub>4</sub>), typically at concentrations between 30-38% by weight, used as the electrolyte in lead-acid batteries.

### how concentrated is the acid in storage batteries >> Basengreen Energy

The acid used in storage batteries is typically sulfuric acid, which is diluted with water to achieve the desired concentration. The concentration of sulfuric acid in a fully charged lead-acid battery is around ...



### LEAD ACID STORAGE CELL

lead acid cell is a basic component of a lead acid storage battery (e.g., a car battery). 12.0 Volt car battery consists of

six sets of cells, each producing 2.0 Volts.



## The Electrifying World of Battery Acid: Everything You Need to Know

In the case of most standard car batteries, it's the lead-acid battery leading the charge--with sulfuric acid (often simply called "battery acid") playing a starring role. Why does it ...

### LIQUID COOLING ENERGY STORAGE SYSTEM

EMS real-time monitoring  
No container design  
flexible site layout



Cycle Life  
**≥8000**

Nominal Energy  
**200kwh**

IP Grade  
**IP55**



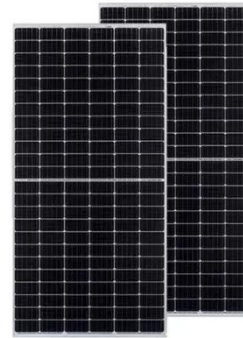
## How Much Acid Should Be in a Battery?

Battery acid plays a crucial role in the performance and lifespan of lead-acid batteries, often found in vehicles, backup power systems, and even some renewable energy setups. But how ...

## What Is The Acid Concentration In Storage Batteries

The ideal concentration of battery acid varies, generally around 29-32% sulfuric acid by weight, equating to about 4. 2-5 mol/L. Maintaining this concentration is

vital for optimal battery ...



---

## Contact Us

---

For catalog requests, pricing, or partnerships, please visit:  
<https://www.kreatywny-dom.pl>

