

**KREATYWNY ENERGY POLSKA**

# **Huawei develops wind and solar complementary communication base stations**



## Huawei develops wind and solar complementary communication bas...

---



### Huawei communication base station wind and solar complementary ...

Huawei Site Power Facility offers energy-efficient, low-carbon power supply solutions, enabling carriers to build environmentally sustainable, resilient networks for modern telecommunications infrastructure.

### What are the wind and solar complementary technologies for ...

Explore reliable power generation systems that integrate wind turbines and solar photovoltaics to provide sustainable energy solutions.



### A WIND SOLAR COMPLEMENTARY COMMUNICATION BASE

Hybrid energy solutions enable telecom base stations to run primarily on renewable energy sources, like solar and wind, with the diesel generator as a last resort.

### Huawei's Single SitePower drives



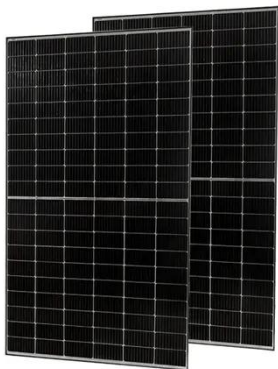


Huawei's 5G Power is a next-gen site power solution designed to create a simple, intelligent, and green telecom energy network. It utilizes Huawei's extensive experience in 5G network evolution, materials ...

---

### **Supplier of wind and solar complementary components for ...**

Huawei's 5G Power uses AI to enable communication and real-time connectivity, and the global management of grid power, energy storage, temperature control, and loads.



---

### **Supplier of wind and solar complementary components for Huawei s ...**

Supplier of wind and solar complementary components for Huawei s 5G communication base stations

---

## **Contact Us**

For catalog requests, pricing, or partnerships, please visit:  
<https://www.kreatywny-dom.pl>

