

How to partition photovoltaic panels during installation

Voltage range

636V-876V

Rated voltage

768V

Cell type

Lithium iron phosphate



Overview

This guide walks you through the key steps of solar panel installation, from choosing the right location to maintaining the system. However, an often overlooked but crucial factor when installing solar panels is the optimal distance between them. Why is the Distance Between Solar Panels Important?

In. If the installation is to be installed on the ground or on a flat roof, it is extremely important to arrange the next rows of the installation in such a way that the shadow of the previous row does not obscure the next one. The main solar components that come with every solar power system or solar panel kit are: Solar Panels Solar panels convert sunlight into electricity through a process called the photovoltaic effect.

How to partition photovoltaic panels during installation



Shade Calculator

Knowing the minimum angle of incidence of sunlight during the year, it is possible to determine the distance between successive rows of photovoltaic panels. The figure below shows the schematic ...

To lower electric bills, consumers quietly install DIY solar

Some plug-in solar systems come with batteries to store power for use during peak demand when electricity rates spike and when storms or heat waves knock out the grid.



Complete Solar Panel Installation Guide for Beginners (2026)

Learn how to install solar panels step-by-step. This comprehensive guide covers site assessment, mounting, wiring, and inverter setup for residential solar systems.



Extract Windows ISO to a hard drive partition and boot from it. @Try3

You can create a separate partition (NTFS formatted with a drive letter), and copy all of the files from the iso to that partition. At this point, you can create a boot entry for it using easbcd ...



Recreate the recovery partition. REAGENTC.EXE: Operation failed: 2

Recreate the recovery partition.
REAGENTC.EXE: Operation failed: 2 -
Windows 10 Forums Forum Windows 10
Forums Backup and Restore Page 1 of 2
1 2 Last Licence23 Posts : 8 ...

Complete Solar Panel Installation Guide

Learn the essential steps for solar panel installation, including site assessment, permits, and safety tips for a successful setup.



Mbr2gpt-Can't open BCD, can't find OS partition problem Help requested

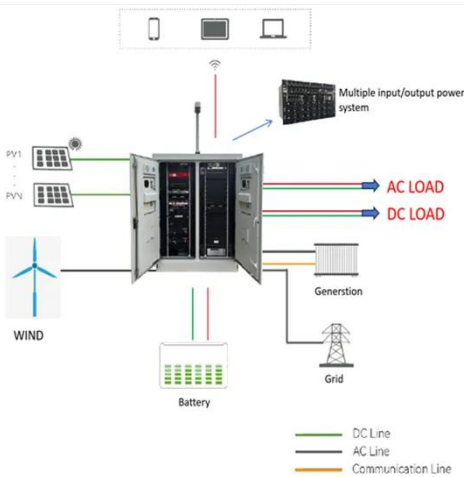
Mbr2gpt-Can't open BCD, can't find OS partition problem Help requested I have a fresh custom build and migrated my



old machine's MBR Win 10 22H2 installation with Macrium Reflect X ...

\$WINRE_BACKUP_PARTITION.MARKER File

There's a small thread on the Microsoft Community forum but no one seems to know whether it's entirely safe to delete. WINRE_BACKUP_PARTITION.MARKER - Microsoft Community



How to Install Solar Panels Step by Step: The Ultimate Guide in 2026

Professional installers use solar panel wiring diagrams to plan the layout of PV modules, accounting for the unique characteristics of your rooftop and environmental factors that can impact ...

Solar Panel Installation Made Simple: Your Step-by-Step Layout

This comprehensive guide will walk you through creating and interpreting solar panel installation diagrams, helping you achieve the perfect setup for your

home's clean energy ...



How to Calculate the Minimum Distance Between PV Panels?

Understand the importance of minimum installation distance for solar panels, calculation methods, and relevant regulations to ensure efficient operation and compliance of solar energy ...



Can't designate partition as recovery partition

Is your disk gpt or mbr? Personally, I don't mess with recovery partitions. I enable the recovery environment without creating a partition for it and it resides in C:Recovery.



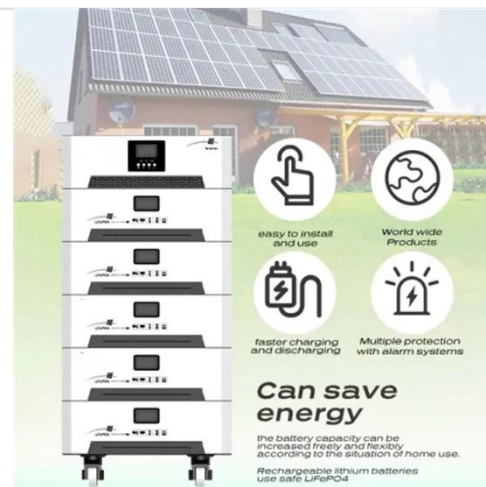
Partition an M.2 NVMe?

The current W11 installation is a 2TB partition on a NVME SSD which I want to split into a 250 GB partition for W11 and programs and a 1.75GB data partition. I tried resizing the partition from ...



Extend Volume or Partition in Windows 10 , Tutorials

How to Extend Volume or Partition in Windows 10 In Windows, you can add more space to existing primary partitions and logical drives by extending them into adjacent unallocated space on ...



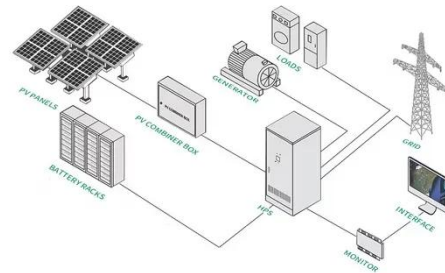
Check if Disk is MBR or GPT in Windows Hardware & Drivers

How to Check if Disk is MBR or GPT in Windows GPT (GUID Partition Table) and MBR (Master Boot Record) are two different partition styles that can be used for a disk. MBR disks use the ...

Recreate WinRE files on a new recovery partition?

In this video, i will take you through the steps to create a Windows recovery partition in a Windows 10 or Windows 11 PC installed in UEFI mode with GPT

partition style.



How to partition photovoltaic panels during installation

What are photovoltaic panels & how do they work? Photovoltaic panels, or solar panels, are the most crucial component of a solar power system. They are responsible for converting sunlight into direct ...

A Pro Guide to Installing Solar Panels

This guide reviews the best practices for solar panel installation, the equipment needed for solar energy systems and how to calculate solar energy installation costs.



Contact Us

For catalog requests, pricing, or partnerships, please visit:
<https://www.kreatywny-dom.pl>

