

# Double-glass solar panel assembly

**Scooter battery**

The battery is installed in the pedal



**Built-in battery in car beam**

The battery is installed in the car beam

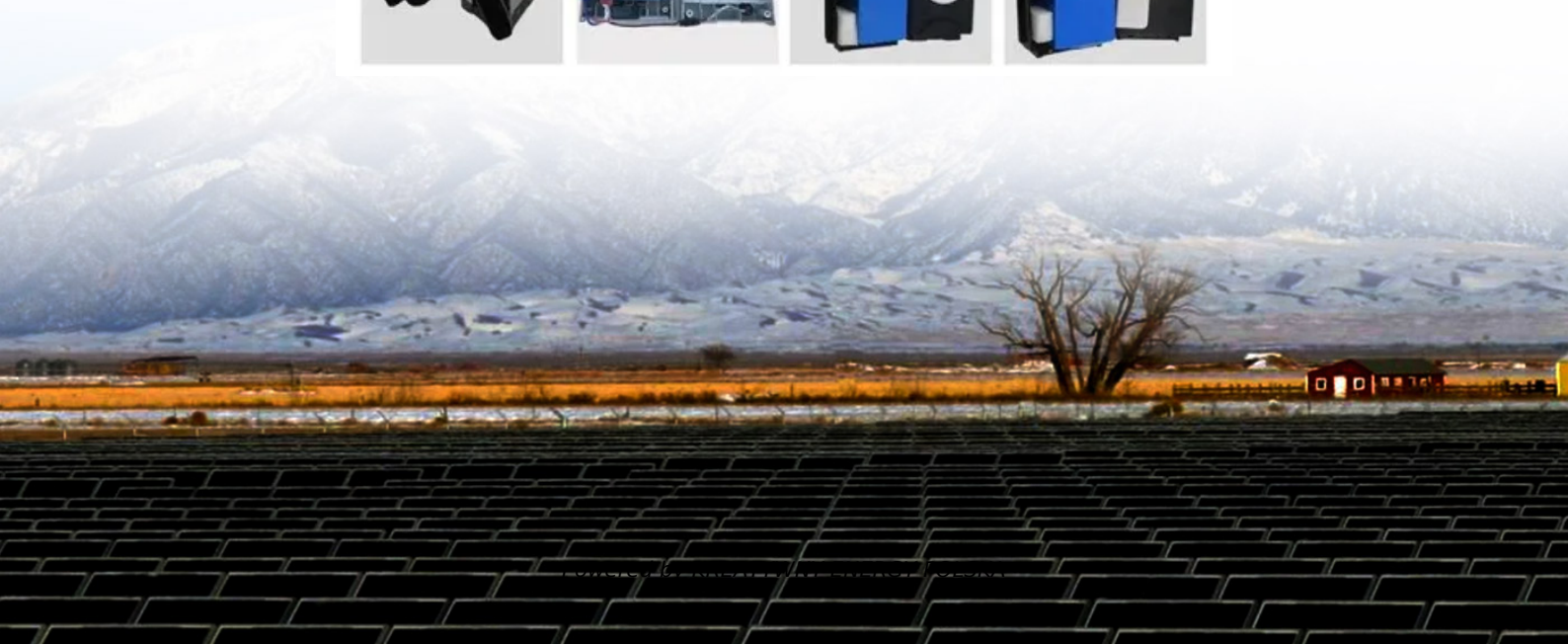


**Pack the battery in the box**

This the battery installation box, replace the battery cells without changing the shell



**Ebike battery**



## Double-glass solar panel assembly

---



### Double the strengths, double the benefits

Traditional solar panels typically feature a glass front and a polymer backsheet. In contrast, double glass modules replace the polymer layer with another glass sheet, creating a robust ...

---

### What is the Double Glass (Dual Glass) Photovoltaic Solar Panel?

What is the Double Glass Photovoltaic Solar Panel? Glass-glass module structures (Dual Glass or Double Glass) is a technology that uses a glass layer on the back of the modules instead of ...



### InstallationGuide for DASSOLAR DoubleGlassPhotovoltaicModule

DAS SOLAR modules shall be installed on proper buildings or other appropriate places (such as ground, garage, building outer wall, roof, PV tracking system) but shall not be installed on any mobile vehicles.

---

## Double-Side Glass Technology in PV

## Systems: Benefits, ...

Double side glass technology makes bifacial panels special. These panels have glass on both the front and back. The glass keeps the solar cells safe inside. Regular panels have glass only ...



## Solarspace Double Glass Photovoltaic Modules Installation Manual

During Modules installation and routine maintenance, operators should follow all safety precautions in this manual and local regulations. If you have any questions, please contact our sales department for ...

## What are Double Glass Solar Panels?

Double-glass solar modules are made up of two layers of tempered glass that cover both sides of the solar panel. As snow accumulates on a typical solar panel or people stomp on it (during ...



## Double-glass Solar Module Machines , PV Module Assembly , Horad

Our portfolio includes not only automatic solar panel production lines, but also



individual equipment for PV modules production, from glass loading equipment at the beginning to solar panel assembly and ...

## What are Double Glass Solar Panels?

Traditional solar panels typically feature a glass front and a polymer backsheet. In contrast, double glass ...



## Why Dual-Glass is the best solar panel technology for rooftops

In contrast, dual-glass solar panels replace the backsheet with a second layer of tempered glass on the rear side of the module. The combined strength of using two sheets of glass ...

## 2025 Complete Guide to Glass-Glass Solar Panels: The Top Choice ...

What Are Glass-Glass PV Modules? Glass-glass PV modules, also known as double glass solar panels, are photovoltaic modules encapsulated with tempered

glass on both the front and ...

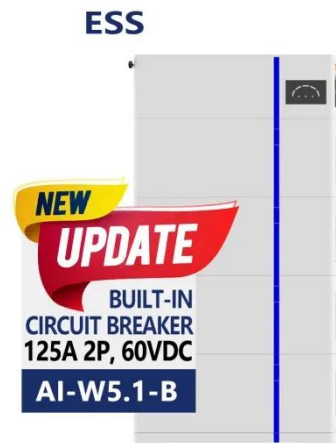


### 2025 Guide to Dual-Glass Solar Modules: When Premium Panels ...

Dual-glass solar modules replace the conventional polymer backsheet with a second layer of tempered glass, creating a symmetric laminate structure. This fundamental design change affects ...

### InstallationGuide for DASSOLAR ...

DAS SOLAR modules shall be installed on proper buildings or other appropriate places (such as ground, garage, building outer wall, roof, PV tracking system) but shall not be installed on ...



## Contact Us

For catalog requests, pricing, or partnerships, please visit:  
<https://www.kreatywny-dom.pl>

