

KREATYWNY ENERGY POLSKA

Double-glass module base



Double-glass module base



Bifacial double glass solar modules: The additional power of bifacial

With the glass module with bifacial cell technology, the light is captured on both the front and back of the module. Increasing the use of light increases the efficiency of the module.

INSTRUCTIONS FOR PREPARATION OF PAPERS

To determine the ability of the module to withstand wind, snow, or ice loads, a rigid test base which enables the modules to be mounted with front side up or front side down was used. The test base ...



JA Solar 620W N-Type Bifacial Double Glass Modules

JA Solar JAM66D45LB 620W N-Type Bifacial Double Glass Module offers exceptional durability and efficiency for residential, commercial, and utility-scale installations. Engineered as a high-efficiency ...

What are the advantages of dual-

glass Dualsun modules?

Dual-glass type modules (also called double glass or glass-glass) are made up of two glass surfaces, on the front and on the rear with a thickness of 2.0 mm each.



Solarspace Double Glass Photovoltaic Modules Installation Manual

This guide contains information regarding the installation and safe handling of Solar- space photovoltaic module (hereafter is referred to as "module"). During Modules installation and routine maintenance, ...

DAS-Solar-D-Matrix

Excellent product appearance and performance Two-sided double-glazed modules, symmetrical structural design, low risk of hidden cracks.



Double the strengths, double the benefits

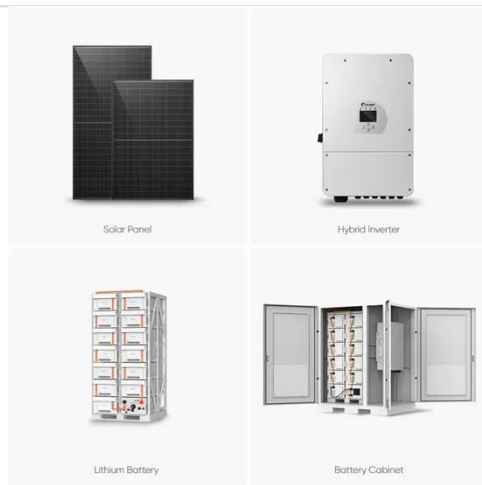
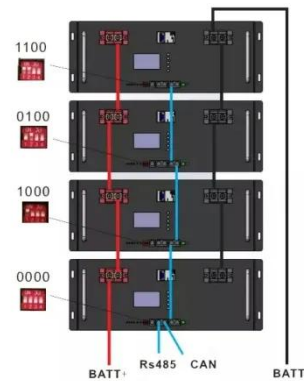
But what exactly sets them apart? What are double glass solar modules?

Traditional solar panels typically feature a glass front and a polymer backsheet. In contrast, double glass ...



Double glass solar module , Maysun Solar

Compared to traditional single glass modules, double glass modules offer significant advantages, particularly in terms of efficiency and durability. The rear glass layer can absorb reflected light, ...



Glass-Glass Solar Panel Technology

Glass-glass module structures (Glass Glass or Double Glass) is a technology that uses a glass layer on the back of the modules instead of the traditional polymer backsheet.

What are Double Glass Solar Panels?

Double-glass solar modules are made up of two layers of tempered glass that cover both sides of the solar panel. As

snow accumulates on a typical solar panel or people stomp on it (during ...



Contact Us

For catalog requests, pricing, or partnerships, please visit:
<https://www.kreatywny-dom.pl>

