

KREATYWNY ENERGY POLSKA

Battery cabinet positive and negative color



Overview

The universal convention for identifying DC polarity designates the color red for the positive terminal and the color black for the negative terminal. Identifying the positive and negative poles is fundamentally important for both the functionality of electronic devices and the safety of the user. Without a consistent method for marking these poles, connecting a power source to a load would be a matter of dangerous guesswork, risking equipment. Knowing how to tell positive from negative battery terminals is one of those basic car maintenance skills that can save you from costly mistakes and dangerous situations.

Battery cabinet positive and negative color

How to Tell Positive and Negative Terminals on a Car Battery



Whether you're jumpstarting your car or switching out the battery, it's incredibly important to know which battery terminal is which. Generally, the positive battery terminal is red and marked ...

How to Tell Which Is Positive and Negative on a Car Battery

Automotive batteries also utilize a standardized color code to quickly distinguish between polarities. The positive terminal, cable, or protective cover is consistently colored red across nearly ...



12 V 10 AH



Household Battery Recycling

Household battery recycling locations
Lead-acid batteries, or "automotive type batteries," are banned from disposal. Consumers may bring lead-acid batteries to any Wisconsin retailer that sells these ...

How to Identify Positive & Negative

Car Battery Terminals

By looking for color coding (red for positive, black for negative), checking for + and - symbols, and noting physical differences like terminal size, you can safely work with your car battery.

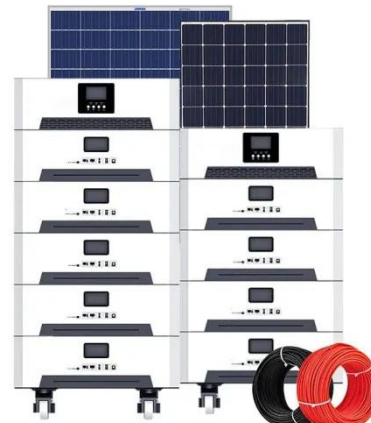


What Color Is Negative and Positive on a Battery?

The proper procedure for connecting a battery involves attaching the positive (red) cable first, followed by the negative (black) cable last. This sequence is performed to avoid the possibility of ...

Low Battery warning , Volvo V40 Forums

Battery is easy to do yourself if you're at all handy around a screw driver and a spanner, just remember to reset the battery management system before you start using the car or it'll kill the ...



How to Identify Positive and Negative Terminals on a Car Battery

Color Clues, but Don't Rely Solely on the Rainbow: Yes, typically red signifies positive (+), like a fiery beacon, while black symbolizes negative (-), lurking in

the shadows.



Replacement battery

Hiya, I have an early 2014 D2 cross country automatic. It keeps complaining about battery level, even after our (rare but very long drives). So I think the battery is shot. Funnily, when I put my ...



Understanding Battery Terminal Colors: Positive and Negative ...

Unlock the mystery of battery terminal colors! Learn how to identify positive and negative indicators for safe connections.

How to Tell Positive and Negative Terminals on a Car Battery

Differentiating the positive and negative terminals on a car battery is elementary. Here's how to spot their differences.



What Colors Are Positive And Negative On A Car Battery?

There are a few other indicators that a car battery will have to easily distinguish the positive and negative for you. The most blatant of these is with plus and minus signs, just as you

Secondary Battery

My main battery just died, had it replaced with same, and car kept giving me Battery charging, so no stop start. When stop/start worked, it was for about 10 sec, and car would start, with ...

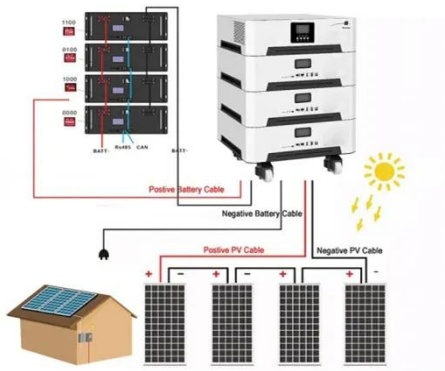
Test certification
CE FC



How to Identify Positive and Negative Battery Terminals

A positive reading indicates that the red probe is on the positive terminal, while a negative reading shows the opposite. This method gives you absolute certainty

about which terminal ...



Low battery charge error , Volvo V40 Forums

Hello everyone, I just bought my first car, a 2014 Volvo V40 T3, and a warning appears on the dashboard that says 'low battery charge.' The car is recently



Battery Recycling for Businesses

Battery Recycling for Businesses Use the chart below to determine how to handle used batteries generated by your business. Batteries that are considered hazardous must be recycled or managed

...



Main Battery Change

Going to change the service battery in my 15 V40cc D2. Anything I need to be ware of or look out for ??



Positive And Negative On A Car Battery: Which Color Is Which?

Typically, a black color means you're dealing with the negative end of the battery, while the red color depicts the positive version of the machine. These colors are standard in any battery ...

Main battery dealership quotes uk

Has anyone here had their v40 main battery replaced by the dealer or any other workshop, if so how much was it (uk)



Main Battery Replacement

Since that battery also supplies power to the ECU memory when the car is switched off, as well as powering the stop/start system, don't ignore it. Like the main battery, Volvo recommend ...



Contact Us

For catalog requests, pricing, or partnerships, please visit:
<https://www.kreatywny-dom.pl>

